

CHECKERED DISHCLOTH



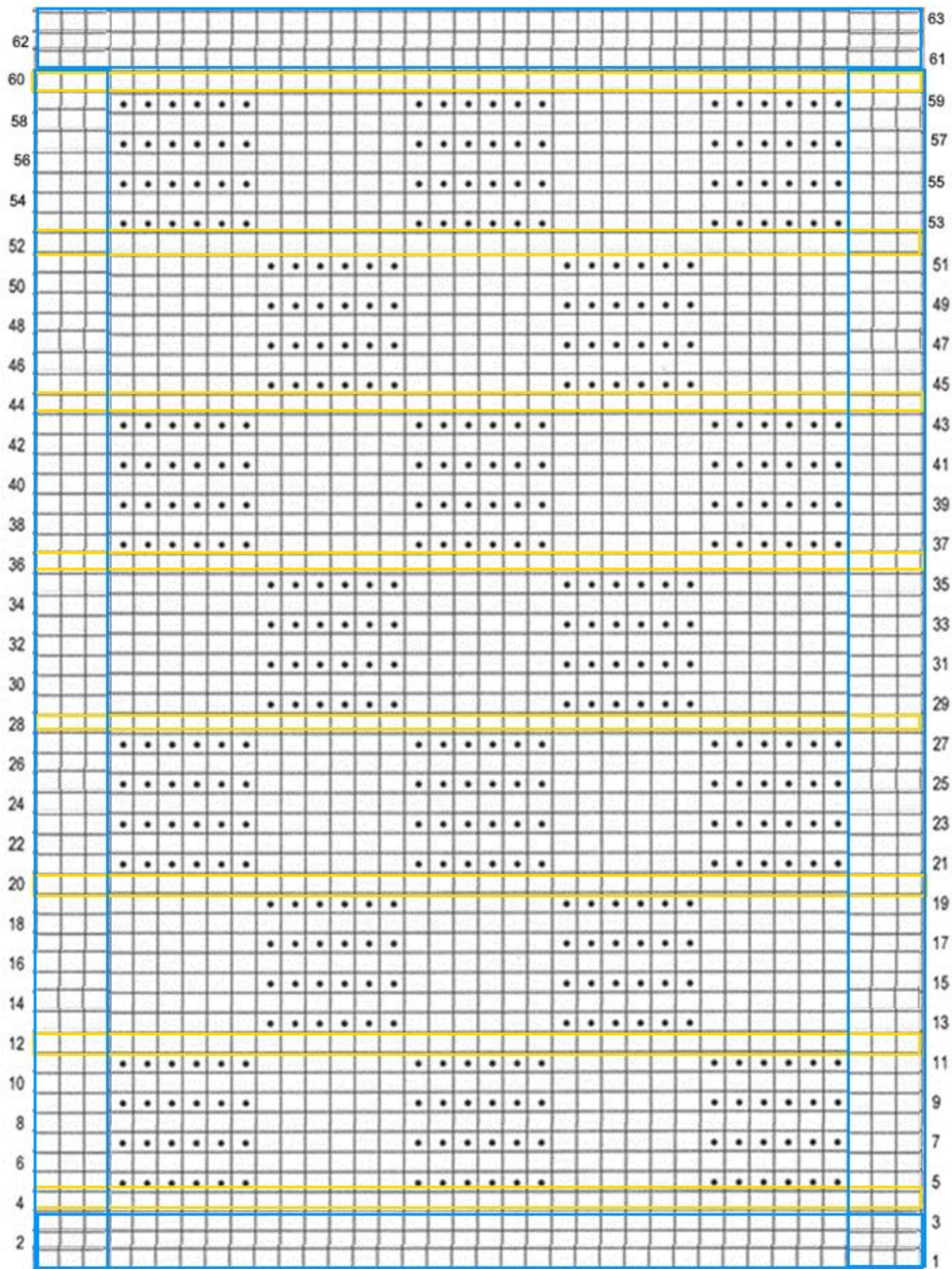
Directions

Using 3.5 mm needles

Size 7 1/2" by 7 1/2"

- 1 set = 1"
- Borders each = 1/4"
- Do 7 sets = 7"

CO 36 and then follow the stitch chart for 62 rows. Bind off on row 63 using knit method.



- Knit
- Purl